

## All band fused coupler

### 1. Features

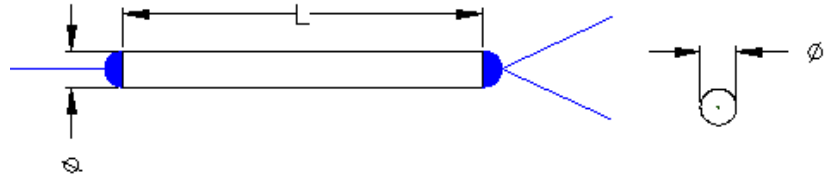
Low Insertion Loss  
 High Reliability  
 Wide Bandwidth

### 2. Applications

Telecommunications  
 CATV Network  
 FTTH/PON

### 3. Compliance

Telcordia GR-1209-CORE-2001  
 Telcordia GR-1221-CORE-1999  
 RoHS



### 4. Specifications

Grade		P	A
Operating Wavelength(nm)		1260~1620	
Operating bandwidth (nm)		1260~1620	
Typical excess loss (dB)		0.07	0.1
Insertion loss (dB)	50/50	≤3.8	≤4.0
	40/60	≤5.1/3.1	≤5.3/3.3
	30/70	≤6.4/2.3	≤6.7/2.5
	20/80	≤8.3/1.6	≤8.8/1.8
	10/90	≤11.5/1.05	≤12.2/1.2
	5/95	≤14.6/0.8	≤15.5/0.9
	2/98	≤18.8/0.7	≤19.5/0.8
	1/99	≤22.5/0.65	≤23.5/0.75
PDL (dB)		≤0.15	≤0.2
Directivity (dB)		≥55	
Operating temperature (°C)		-40 ~+85	

### 5. Mechanical Dimensions

Configuration	1x2 or 2x2		
Fiber length	1m, others on request		
Fiber Type	SMF-28e		
Pigtail type	250μm bare fiber	900μm loose tube	900μm/2mm/3mm loose tube
Dimensions(mm)	Φ 3.0×54	Φ 3.0×54	90x20x9.5

E-mail: [sales@op-future.com](mailto:sales@op-future.com)  
 Web : <http://www.op-future.com>